

Corners to be Indexed

N1/4 15-106-42  
 NE 16-106-42  
 E1/4 16-106-42  
 N1/4 22-106-42

STATE OF MINNESOTA, } ss.  
 COUNTY OF MURRAY, }

I hereby certify that the within Instrument was filed in this office for record on the 5<sup>TH</sup> day of FEBRUARY A.D. 20 19 at 9:00 o'clock A. M. and was duly recorded as Document No. \_\_\_\_\_

I hereby certify that this document and the data contained herein was prepared by me or under my direct supervision.

Jerry G. Johnson  
 License No. 50343

1-31-2019  
 Date

Coelwyn C. Larson  
 County Recorder

## CERTIFICATE OF LOCATION OF GOVERNMENT CORNER

Land survey monuments situated in Section 15, Township 106, Range 42, 5TH P.M.

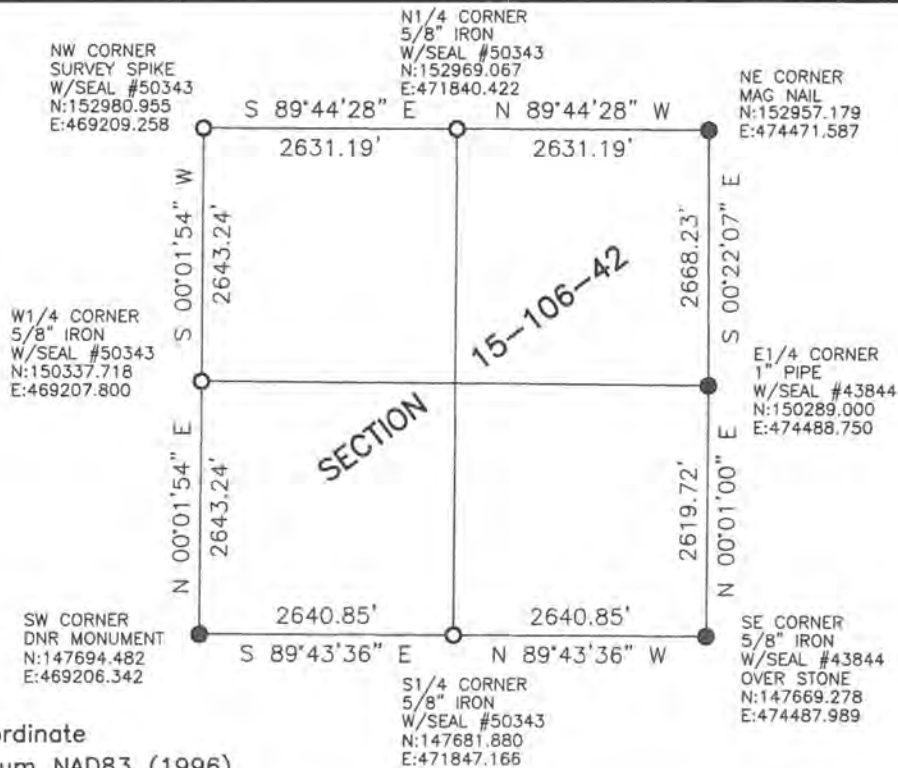
STATE OF MINNESOTA, County of MURRAY

STATEMENT OF EVIDENCE:

1866 - Original government survey.



- FOUND MONUMENT
- SET MONUMENT



Minnesota State Plane Coordinate  
 System Murray County Datum NAD83 (1996)

Statement of Evidence

N1/4 15-106-42

In 1866, J.W. Bishop did the original subdivision of the township.

On August 15, 2018, Bueltel-Moseng Land Surveying set a 5/8" iron with seal #50343 midway and on line between the section corners.

NW 15-106-42

In 1866, J.W. Bishop did the original subdivision of the township.

On August 15, 2018, Bueltel-Moseng Land Surveying set a survey spike with seal #50343 17.4 feet north of the centerline and at MNDot stationing as shown on the plans. It is in the centerline of the roads to the north and south.

W1/4 15-106-42

In 1866, J.W. Bishop did the original subdivision of the township.

On August 15, 2018, Bueltel-Moseng Land Surveying set a 5/8" iron with seal #50343 midway and on line between the section corners. It is in line with the fence to the east.

S1/4 15-106-42

In 1866, J.W. Bishop did the original subdivision of the township.

On August 15, 2018, Bueltel-Moseng Land Surveying set a 5/8" iron with seal #50343 midway and on line between the section corners.